



INSTRUCTION BULLETIN

No. 9008642
Machine: T16
Published: 11-2015
Rev. 00

NOTE: DO NOT DISCARD the Parts List from the Instruction Bulletin. Place the Parts List in the appropriate place in the machine manual for future reference. Retaining the Parts List will make it easier to reorder individual parts and will save the cost of ordering an entire kit.

NOTE: Numbers in parenthesis () are reference numbers for parts listed in Bill of Materials.

Installation instructions for **kit number 9008013**

SYNOPSIS:

This kit contains the parts needed to install / replace the scrub head on T16 scrubbers.
Please follow step-by-step instructions.

SPECIAL TOOLS / CONSIDERATIONS: NONE

(Estimated time to complete: 2 hours)



PROTECT THE ENVIRONMENT

Please dispose of packaging materials, used machine components such as batteries and fluids in an environmentally safe way according to local waste disposal regulations.

Always remember to recycle.

PREPARATION:

1. Remove the brushes from the scrub head. Refer to the *MAINTENANCE* section of the *OPERATORS MANUAL* for instructions how to remove the brushes from the scrub head.
2. Park the machine on a clean level surface, completely lower the scrub head, turn off the machine, and remove the key.

FOR SAFETY: Before leaving or servicing machine, stop on level surface, turn off machine, and remove key.

3. Disconnect the battery cable from the machine.



WARNING: Always disconnect battery cables from machine before working on electrical components.

INSTALLATION:

NOTE: Complete Step 1 through Step 6 only if removing an existing scrub head from the machine. Proceed to Step 10 if the machine does not have a scrub head installed.

1. Disconnect the wire harness from the brush motors.
2. Disconnect the solution supply hose from the machine. Set the hose clamps aside. Discard the solution supply hose.

3. Note position of M8 hex screw / M8 hex nut. The M8 hex screw / M8 hex nut must be returned to same position when pressure is reapplied to the scrub head later in this procedure. (Fig. 1)

4. Loosen the M8 hex screw / M8 hex nut to relieve the pressure from the scrub head assembly. (Fig. 1)

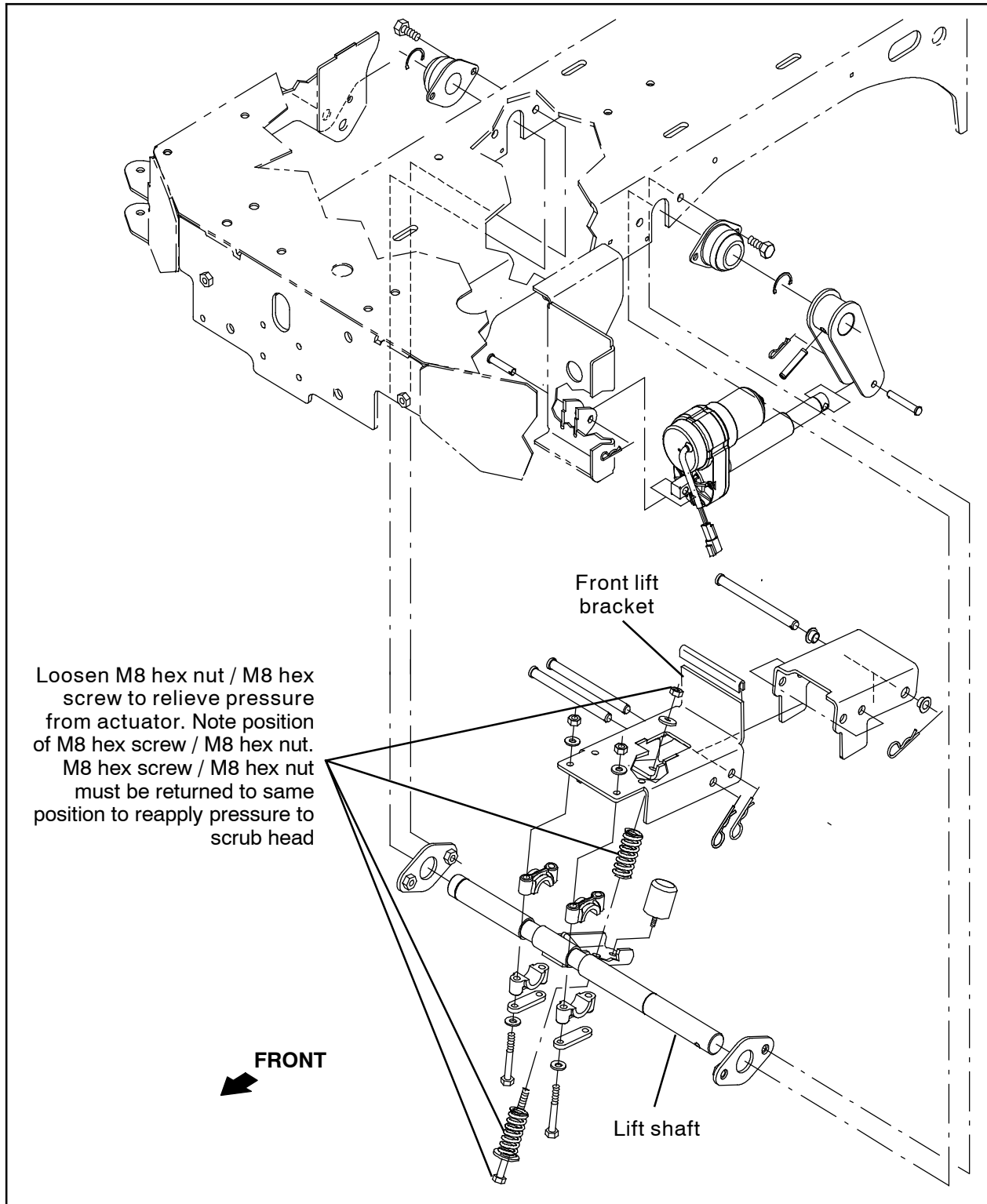


FIG. 1

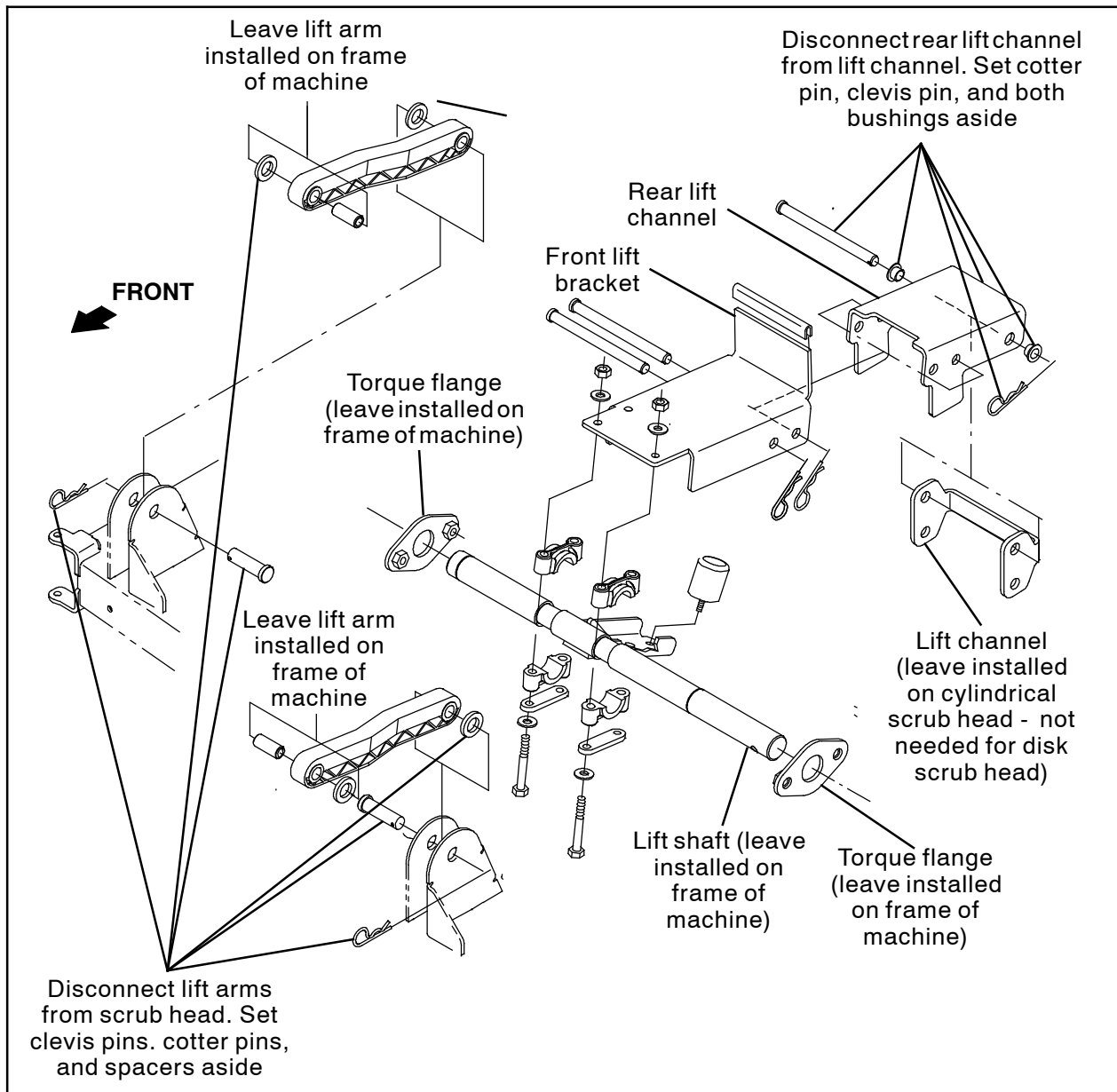


FIG. 2

5. Disconnect both scrub head lift arms from the scrub head. Set the cotter pins, clevis pins, and spacers aside. (Fig. 2)
6. Disconnect the rear lift channel from the scrub head. Set the cotter pin, clevis pin, and both bushings aside. (Fig. 2)
7. Chock the back of the rear tires and jack up the front end of the machine. Refer to *MACHINE JACKING* in the *MAINTENANCE* section of the Operators Manual for additional information for safely jacking up the machine.

8. Position two jack stands at the designated locations under the front of the machine and lower the machine onto the jack stands.

FOR SAFETY: When servicing machine, block machine tires before jacking machine up. Use a hoist or jack that will support the weight of the machine. Jack machine up at designated locations only. Support machine with jack stands.

9. Remove the scrub head from under the machine. Move the removed scrub head away from the machine and out of the way.
10. Install brushes into the new scrub head and position the scrub head near the machine.
11. Position the new scrub head under the machine so all components can be reconnected / reinstalled.
12. Connect the main wire harness to both brush motors. (Fig. 3 / Fig. 4)
13. Connect the solution manifold (17) to the water solenoid valve and the scrub head.
14. Raise the machine off the jack stands, remove the jack stands from under the machine, and lower the machine to the floor.
15. Connect the rear lift channel to the scrub head. (Fig. 2 / Fig. 3)
16. Connect both scrub lift arms to the scrub head. (Fig. 2 / Fig. 3)
17. Tighten the M8 hex screw / M8 hex nut to set the pressure for the scrub head. (Fig. 1)
18. Reconnect the battery cable to the machine.
19. If installing a disk scrub head onto a machine previously equipped with a cylindrical scrub head refer to the *RECONFIGURE MACHINE* section in this bulletin to reconfigure the machine for the new scrub head.
20. Test machine: Ensure scrub head moves through entire range of motion and the brushes function properly.

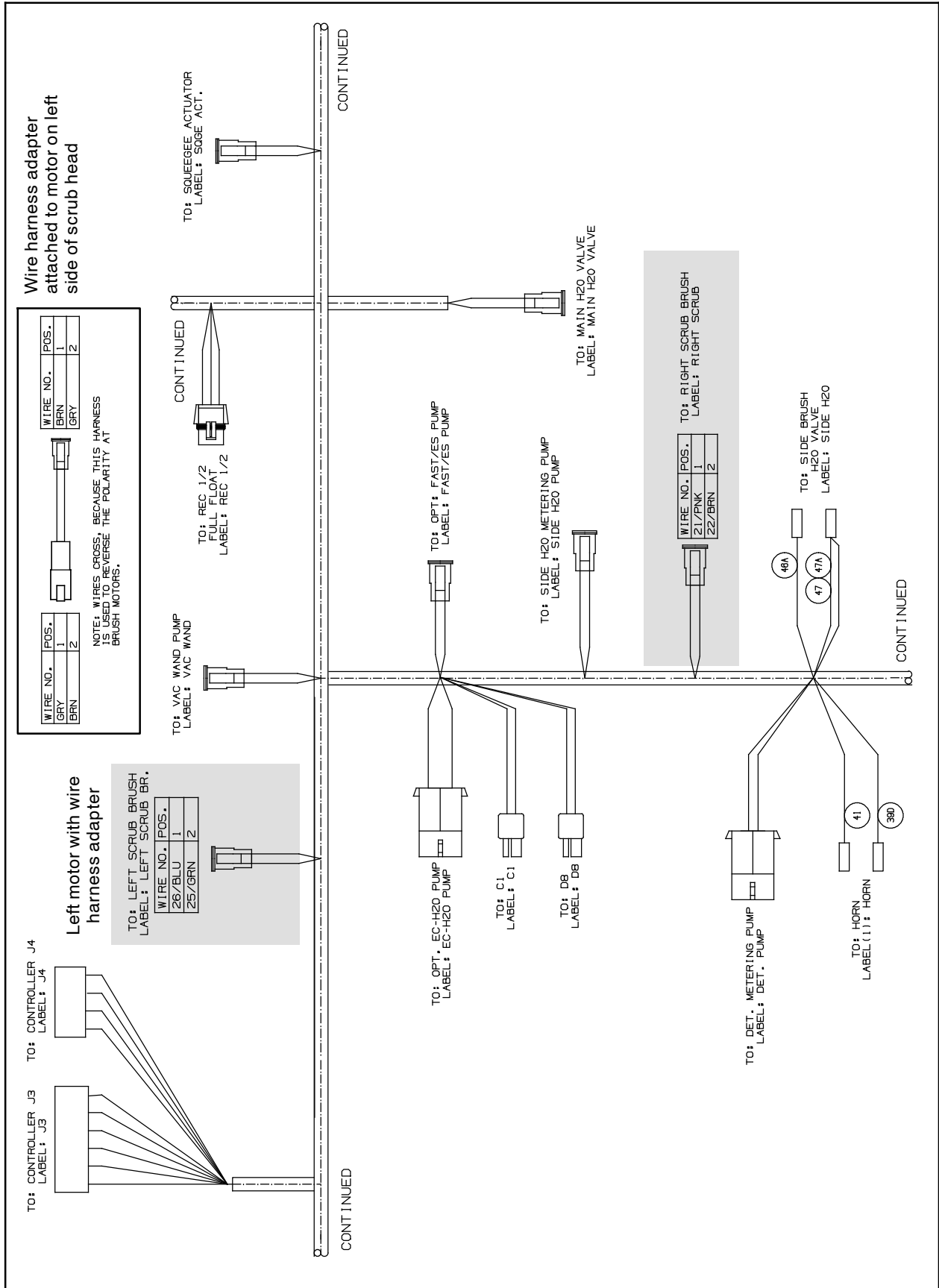


FIG. 3

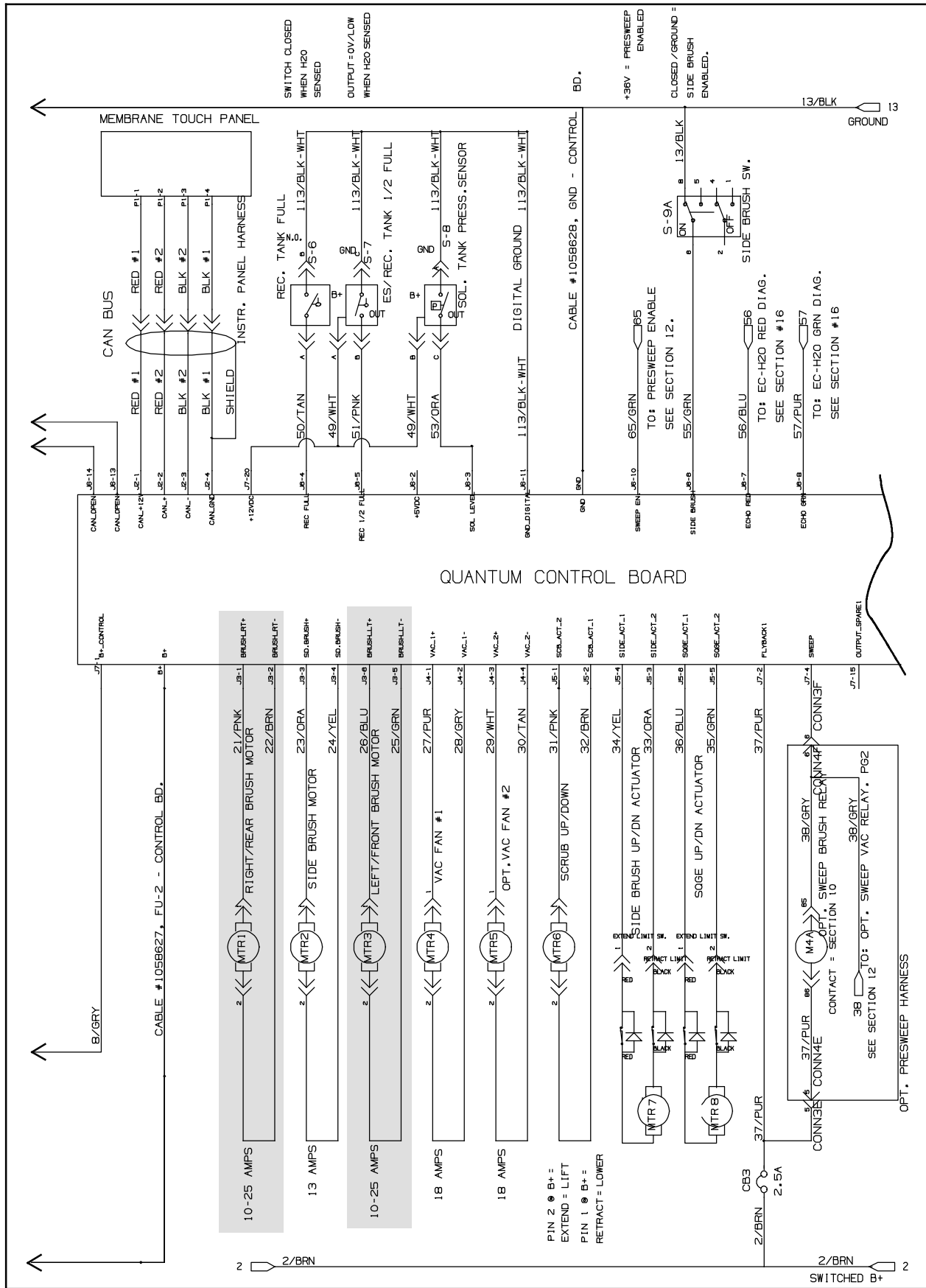


FIG. 4

RECONFIGURE MACHINE:

1. Press and hold the *Configuration mode button* while turning on the key to the on position. Continue holding the *Configuration mode button* until CONFIG MODE appears on the LCD display. Release the configuration mode button. (Fig. 5)



FIG. 5

2. Press the *Brush pressure button* to enter the machine configuration mode. (Fig. 6)

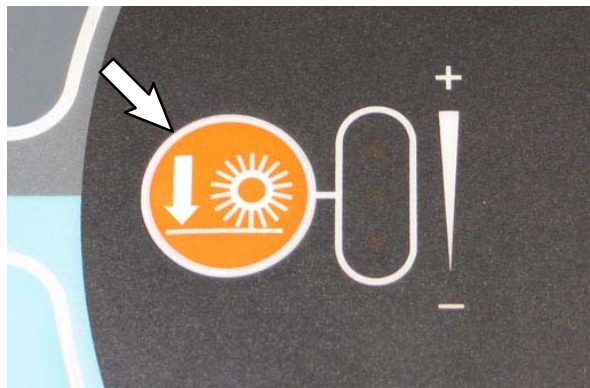


FIG. 6

C1: Disk/Cyl should appear in the LCD display. (Fig. 7)



FIG. 7

NOTE: If Cyl appears below C1: Disk/Cyl proceed to the following step to reconfigure the machine for the new scrub head. If Disk appears below C1: Disk/Cyl no changes are necessary. Proceed to Step 8 to exit configuration mode.

3. Press the *Brush pressure button* to select the mode setting. (Fig. 8)

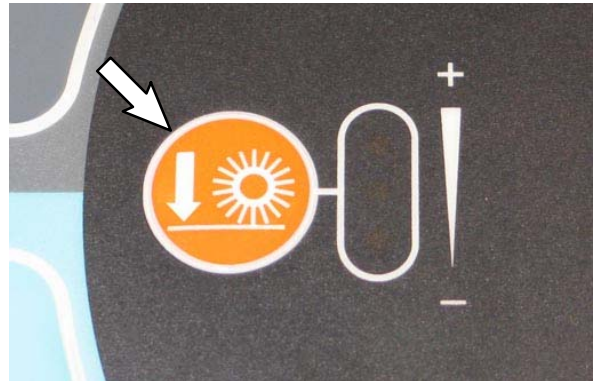


FIG. 8

The < symbol will appear in front of the setting. (Fig. 9)



FIG. 9

4. Press the *Contrast control button* to scroll down the disk brush setting. (Fig. 10)



FIG. 10

5. Press the *Brush pressure button* to select and save the setting. (Fig. 11)



FIG. 11

The < symbol no longer appears in front of the brush setting after it is saved. (Fig. 12)



FIG. 12

6. Turn the key switch to the OFF position to exit the configuration mode .

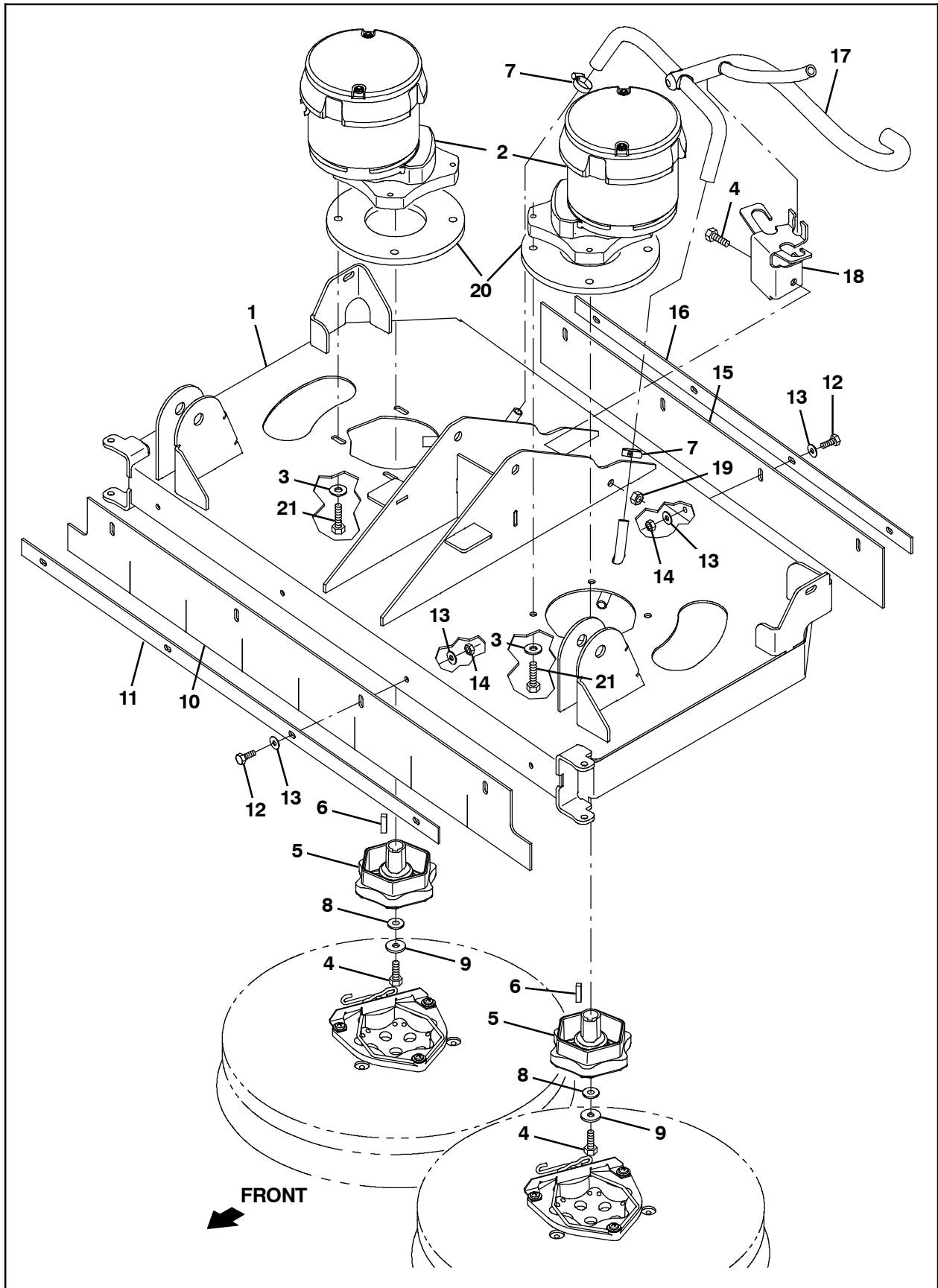


FIG. 13

Bill Of Materials For Head Kit, Disk, 900mm, DI [T16] - 9008013

Ref.	Tennant Part No.	Description	Qty.	
1	1052764	Head Wldt, Disk	1	
▽	2	1053341	Motor, Ele, 36vdc 0360rpm 1.00hp Gear	2
▲	1066573	Brush Kit, Motor	1	
3	01685	Washer, Flat, 0.38b 0.88d .08, SS	8	
4	09010	Screw, Hex, M8 X 1.25 X 25, SS	3	
5	377364	Hub, Drive, Brush, Disk, 0.75b [6t]	2	
6	00928	Key, Sq, 0.25 X 0.25, 1.00l	2	
7	54333	Clamp, Hose, Wormdrive, 0.31- 0.88d, .31w	2	
8	41186	Washer, Flat, Belleville, .31	2	
9	1017218	Washer, Flat, 0.32b 1.00d .12, SS	2	
10	1057021	Skirt, Rbr, .12, 03.75w 37.00l, 04/ SI	1	
11	1057022	Strip, Retainer, Skirt, Front	1	
12	08716	Screw, Hex, M6 X 1.00 X 20, SS	8	
13	01684	Washer, Flat, 0.27b 0.69d .05, SS	16	
14	08712	Nut, Hex, Lock, M6 X 1.00, NI, SS	8	
15	223520	Skirt, Rbr, .12, 03.75w 28.00l, 04/ SI	1	
16	223537	Strip, Retainer, Skirt, Front, LH	1	
17	1057591	Manifold, Soltn	1	
18	1068004	Bracket, Guide, Hose	1	
19	07791	Nut, Hex, Flng, M8 X 1.25	1	
20	1070968	Ring, Spacer	2	
21	09023	Screw, Hex, M8 X 1.25 X 35, FI, SS	8	

TENNANT COMPANY
P. O. Box 1452
Minneapolis, MN 55440-1452